

Jukes & Co

Estate Agents



South Norwood Hill

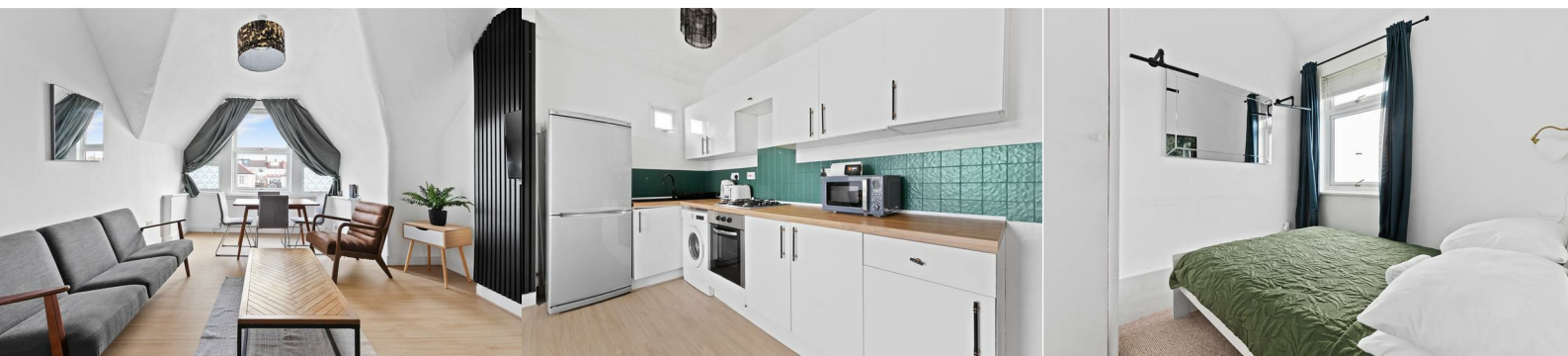
, London, SE25 6BY

£250,000

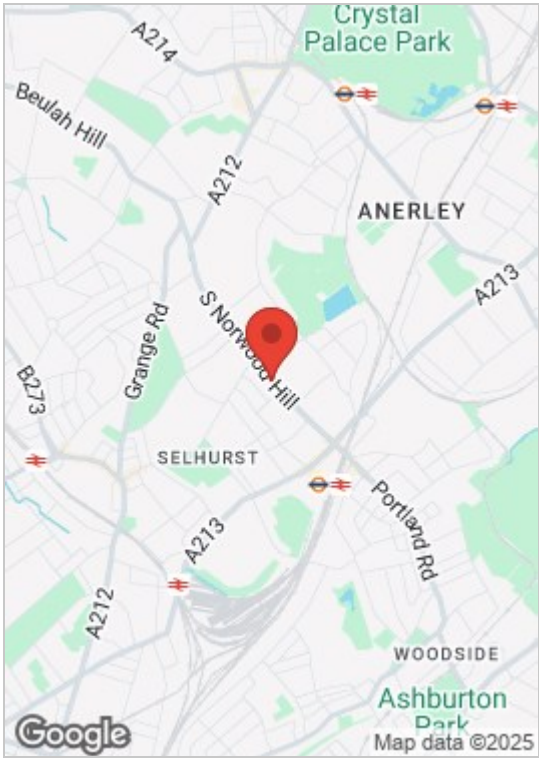


An Absolutely Stunning bright Period two bedroom top Floor Conversion flat. Tastefully designed by the current owners and offering a wealth of character conveniently positioned on a popular and well known road from the High street of South Norwood with its independent cafes and eateries including Mama Dough Pizza Restaurant, Cafe's and other amenities. Transport links are fantastic and offer a range of ways to get to Central London within 12 minutes and surrounds whether by Train via Selhurst and Norwood Junction or by numerous Bus routes.

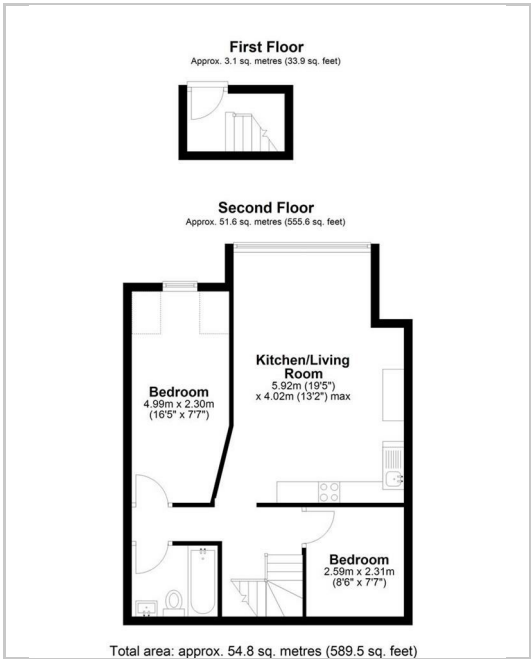
Just a short walk away is the Meadow ideal for exploring in your spare time and with The Lakes, The Country Park and Grange wood you won't be short of options. Features of the property include an Impressive modern Lounge and open plan kitchen, modern shower room and off street parking. A great buy and a beautiful first home in a popular location.



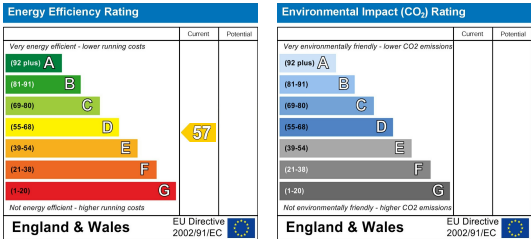
Area Map



Floor Plan



Energy Efficiency Graph



These particulars, whilst believed to be accurate are set out as a general outline only for guidance and do not constitute any part of an offer or contract. Intending purchasers should not rely on them as statements of representation of fact, but must satisfy themselves by inspection or otherwise as to their accuracy. No person in this firms employment has the authority to make or give any representation or warranty in respect of the property.